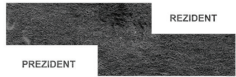


# P/RESIDENTIAL RESIDENCE

## Presidential Villa on Slavín Hill in Bratislava

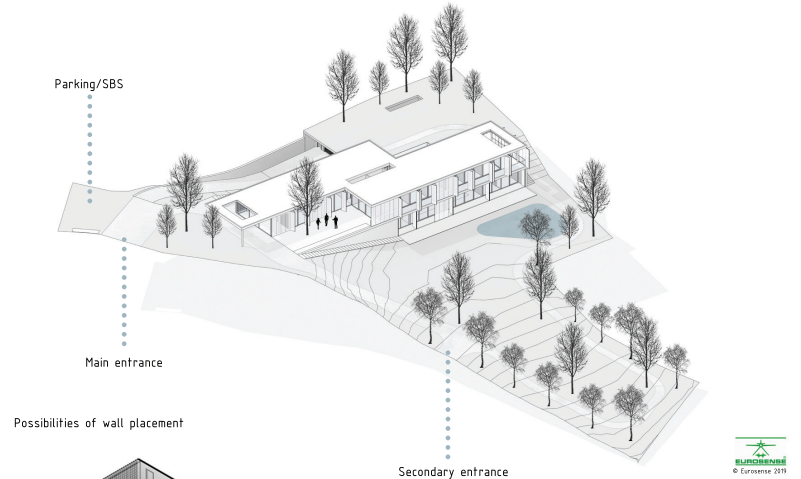
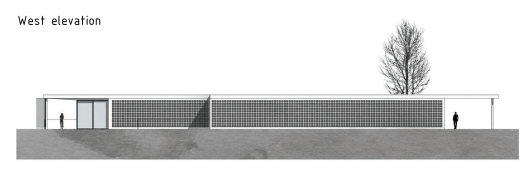
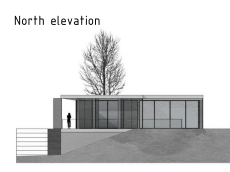
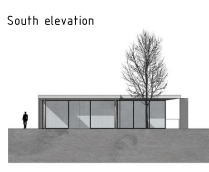
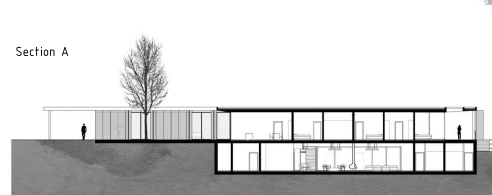
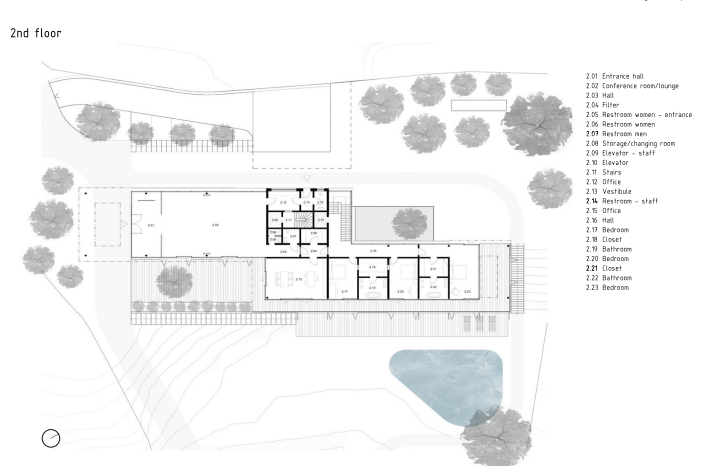
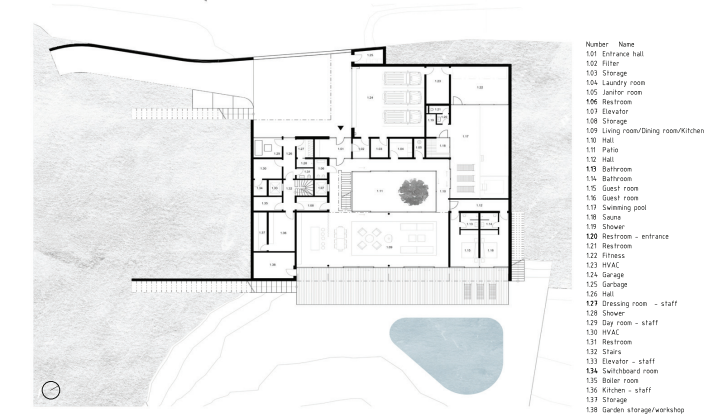
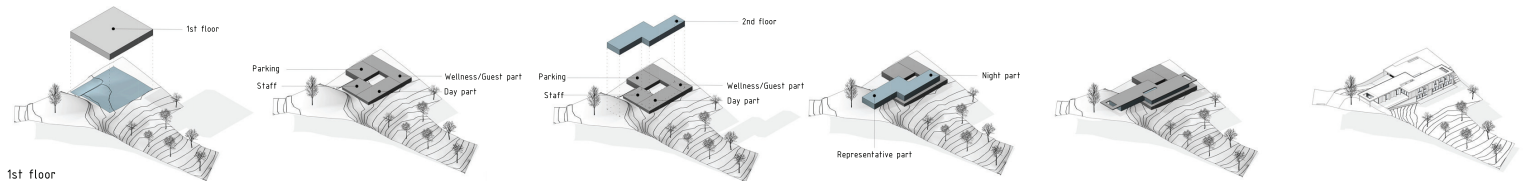
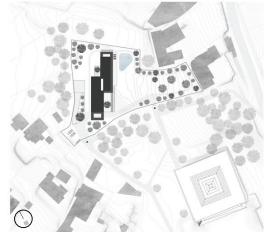
244739  
Poster 1



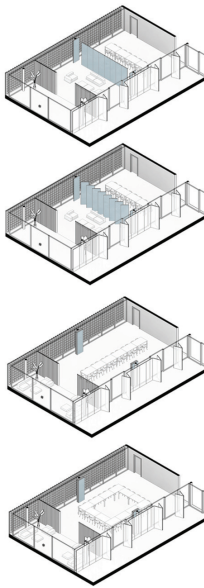
Presidential villa expresses the true nature of the Chief of State – they are a representative states(wo)man, but also have their own needs and personal life. This concept points out that neither part of presidential nature should be prioritized. They complement each other and it is hard to say which one of the two is more important. When designing the residence, I aimed for balance between the professional and personal aspect of the President's life.



Situation

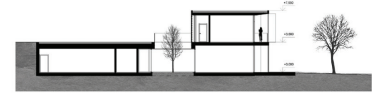


Possibilities of wall placement



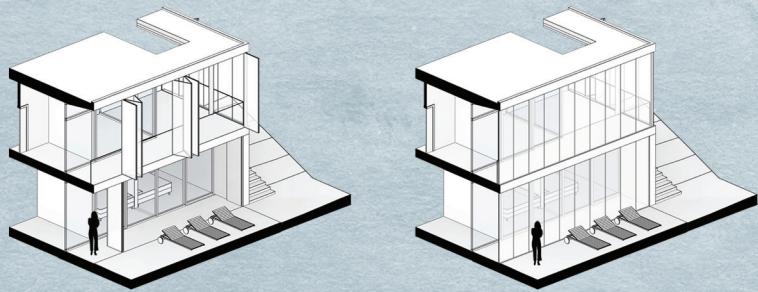
When I was designing the representative part of the house, I considered the importance of variability. Many different events may take place in the presidential villa and the number of guests can differ, but the aim is for everyone to feel comfortable and welcome. I have reached this goal by using a separating wall which can either divide the room into a dining room and a lounge, or connect these two using the rotating parts of the wall. Another option is a complete removal of the wall which creates one large room with area big enough for approximately 20 people.

Section B





When planning the facade I respected the requirements for privacy and at the same time, the extent of glassing and hence the openness of the entire object in consideration with the surroundings.. To accomplish this, I used window shutters which are fully modulatory and the inhabitant can decide the level to which they are open. The shutters are made of matt glass which also provides shade. The back side of the facade is created by a double-perforated wall, which obstructs a direct view into the western part of the villa.



244739  
Poster 2

