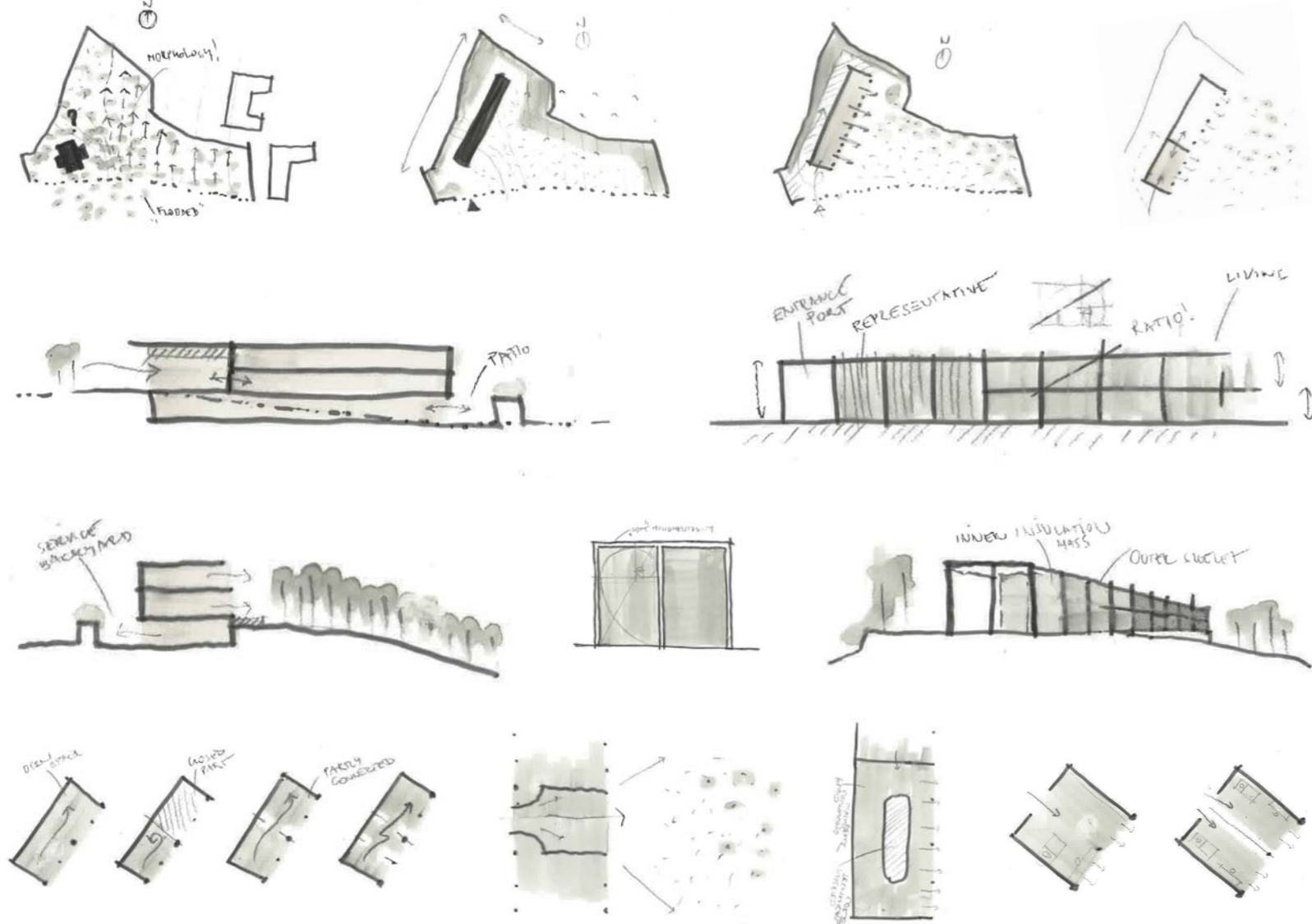


CONCEPT



Presidential Villa on Slavin Hill in Bratislava

The basic linear form responds to the terrain morphology and provides views of the landscape. The mass of the new residence zones the plot to the entrance area, technical backyard, a representative garden and a private garden with a patio. In response to the location of the original, demolished villa, it places a representative premises in its place.

The form works with elements of expressive minimalism in order to achieve cleanliness and readability. The continuous glazed areas are concentrated towards the garden and the city, relieving the matter and opening the object to the surroundings. At the same time, they provide plenty of privacy, thanks to the object orientation and distance of the residential premises from the adjacent public spaces around the Slavin monument.

Thanks to the slimmness of the elements, the load-bearing frame gives the impression of a subtle monument as an expression of non-violent dominance. The skeletal structure reflects the function of the modules. The proportions have a golden ratio to enhance the visual impression of the observer.

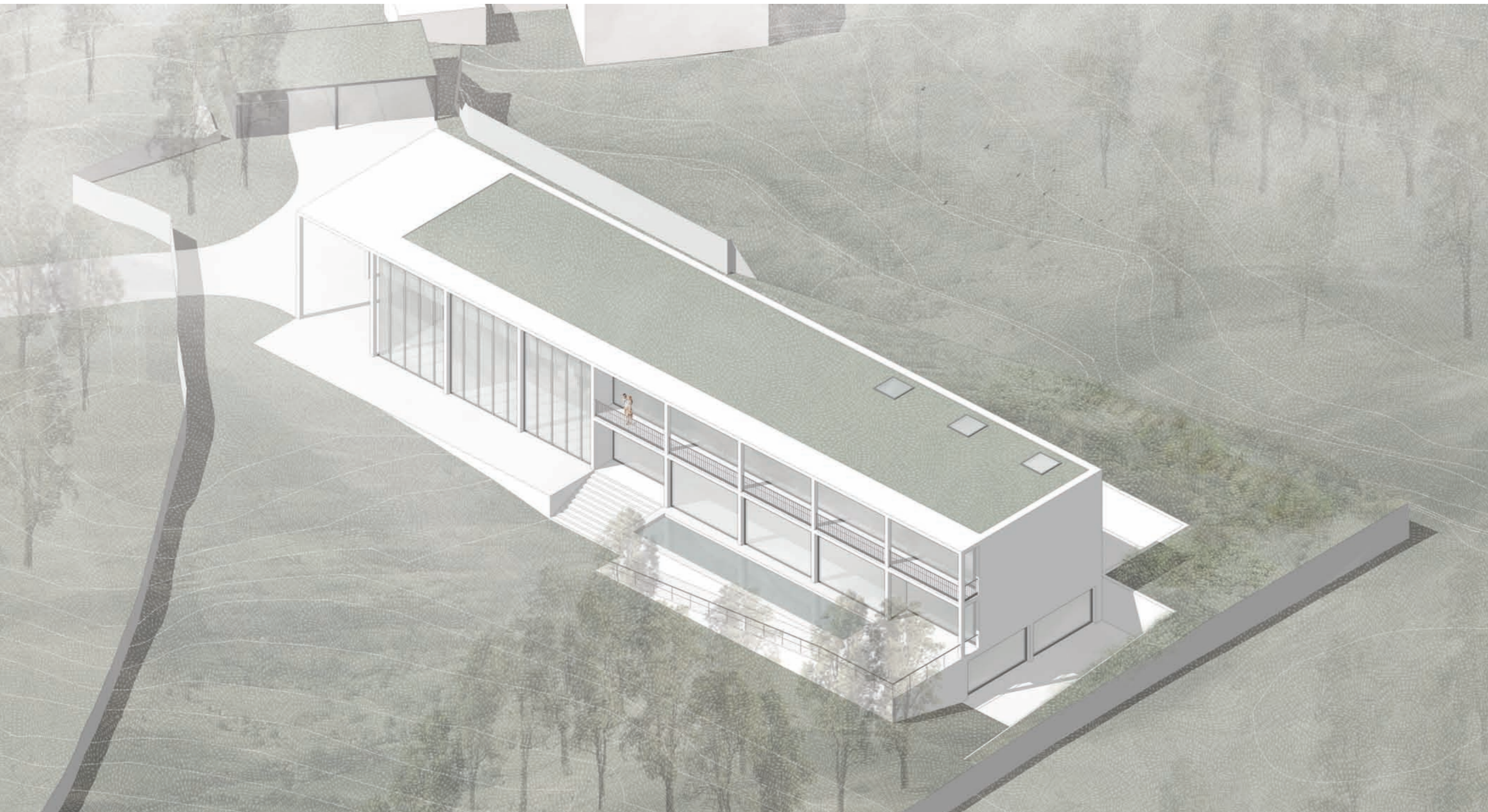
Subtlety is achieved by reversing the layer order. Linear cubic form creates the inner insulating mass of the building. The slimmness of the skeleton forming the outer shell with the break of the thermal bridges is achieved by releasing it from the additional thermal insulation layers that would create a false impression of authentic proportions.

The spatial layout provides variability in number and size. Bedrooms can be divided to vary their amount. Representative premises can be reduced or occasionally changed as needed.

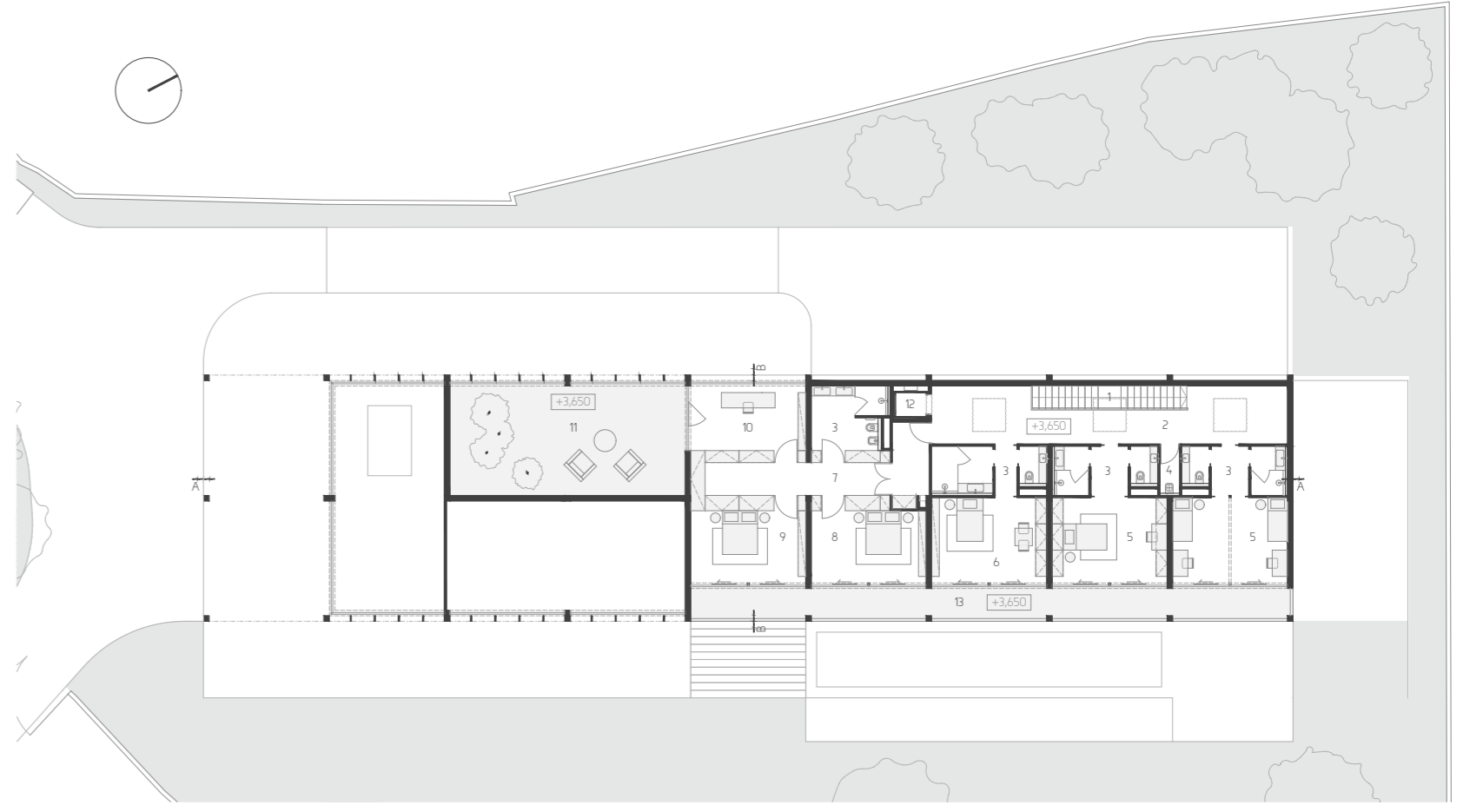
SITE PLAN I S 1:600



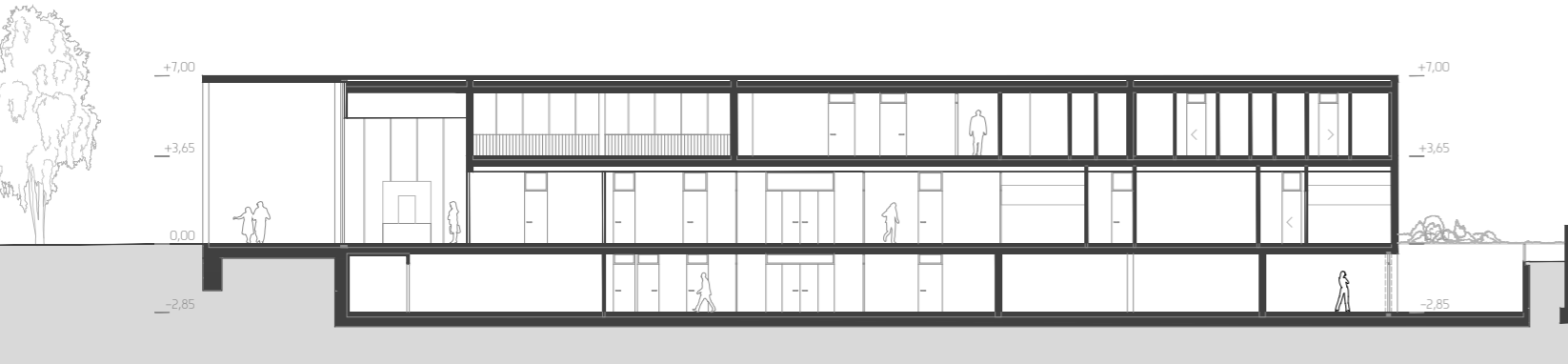
AXONOMETRY



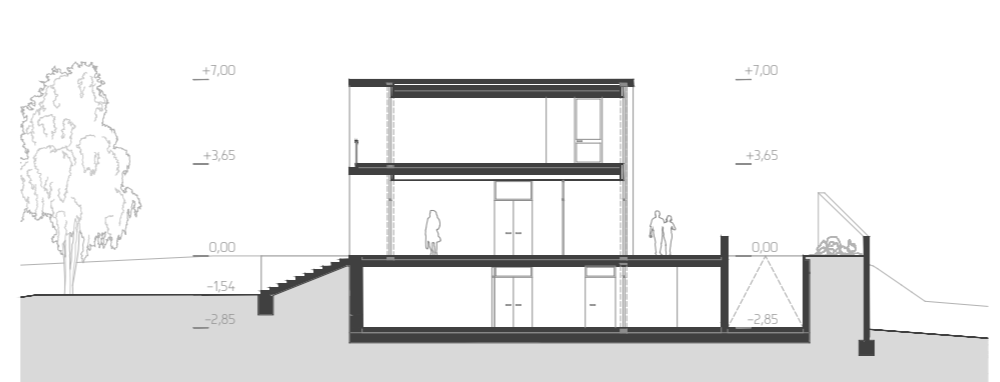
FIRST FLOOR PLAN I S 1:300



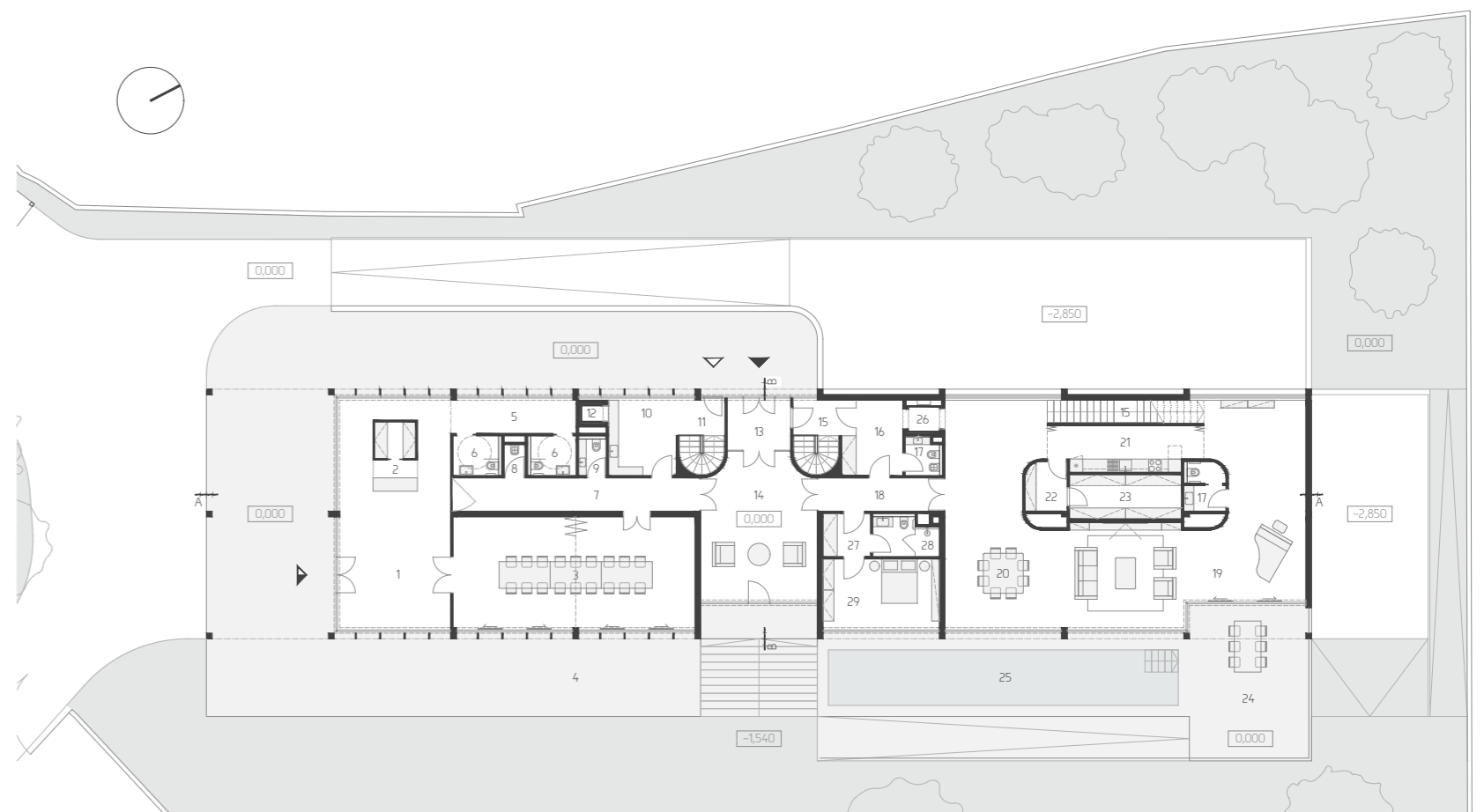
LONGITUDINAL SECTION AA I S 1:300



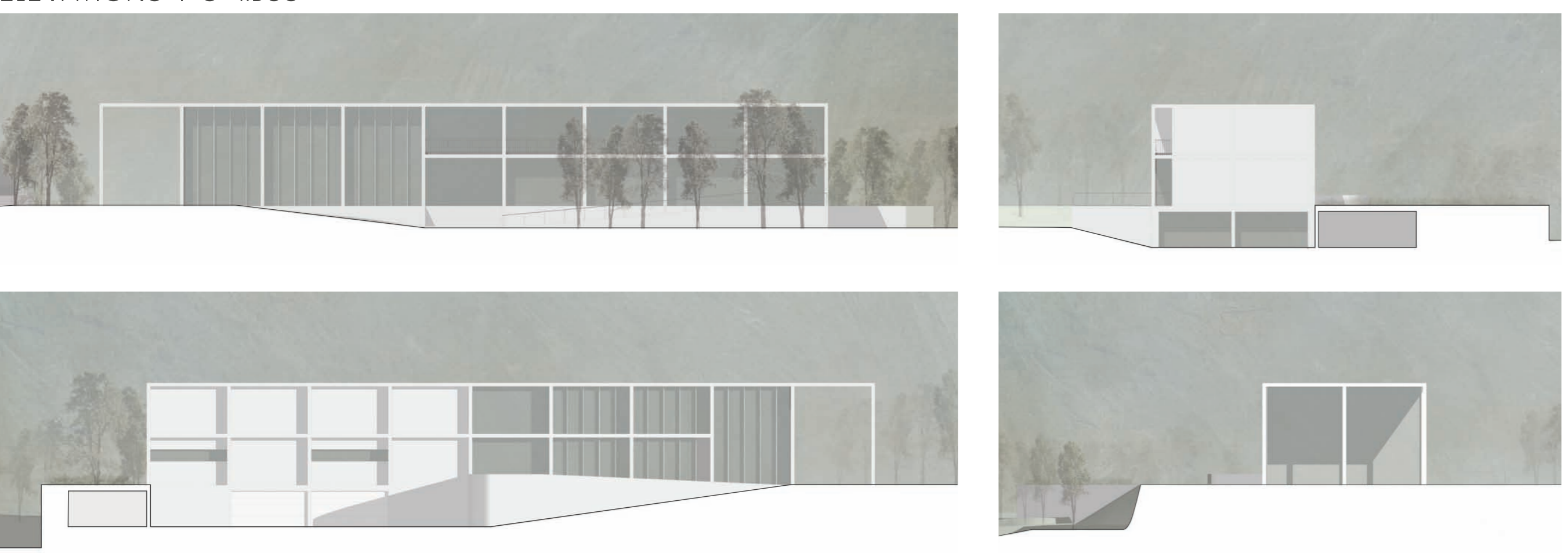
CROSS SECTION BB I S 1:300



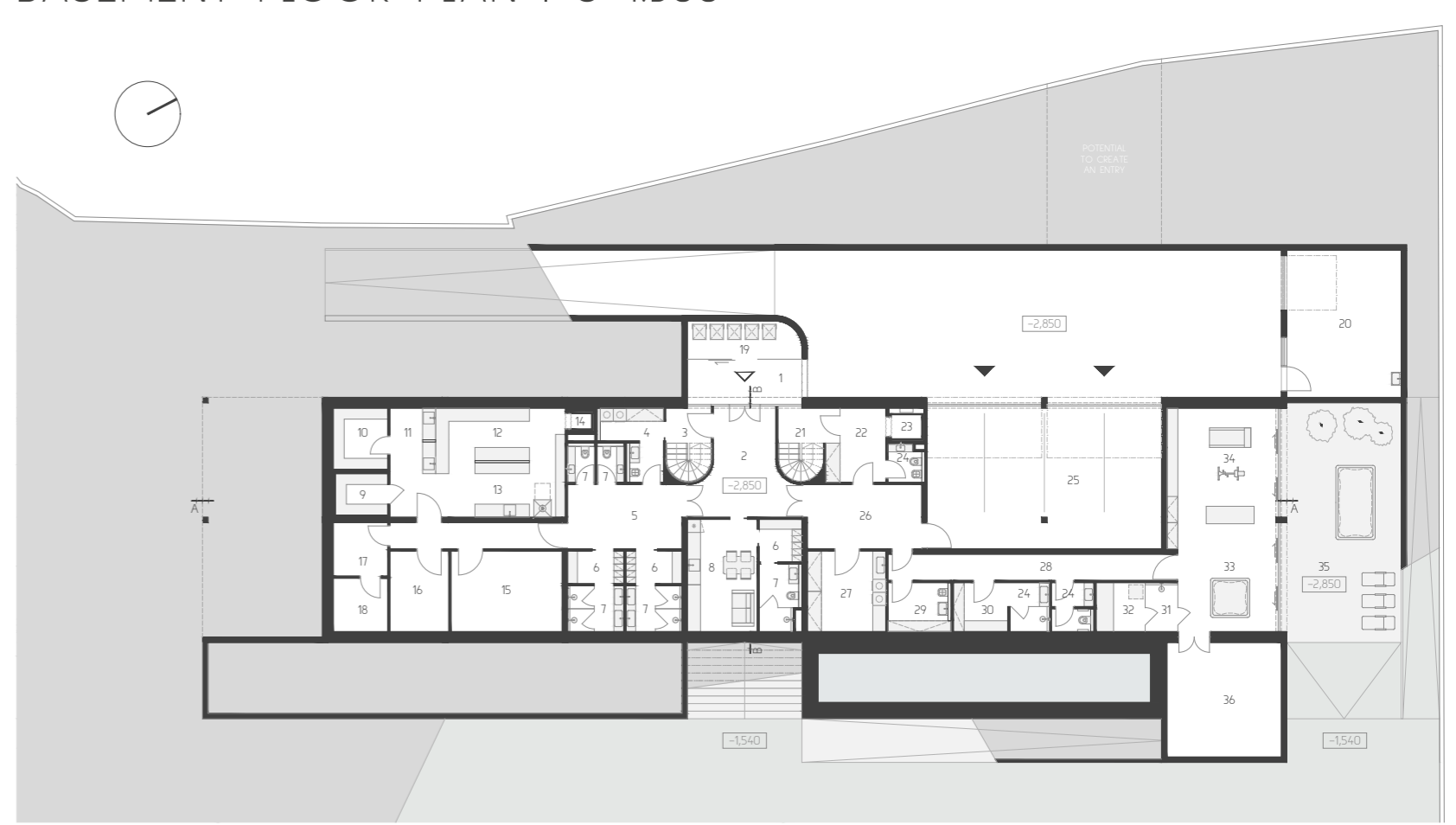
GROUND FLOOR PLAN I S 1:300



ELEVATIONS I S 1:300



BASEMENT FLOOR PLAN I S 1:300



VISUALIZATION

