



GEOGRAFICKÝ ÚSTAV SAV  
INSTITUTE OF GEOGRAPHY SAS

# Krajinná pokrývka Európy a jej zmeny v rokoch 1990-2012

*Ján Feranec, Geografický ústav SAV, Bratislava*





Výskum sa realizoval na troch úrovniach priestorovej a obsahovej detailnosti:

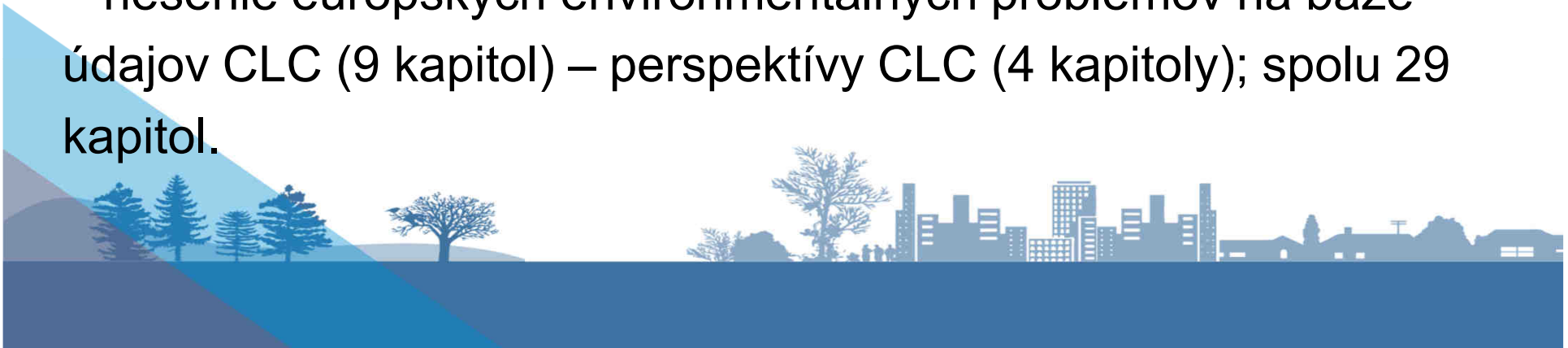
- **celoeurópskej,**
- celoslovenskej až regionálnej,
- lokálnej.





Finalizácia doterajších výsledkov celoeurópskej úrovne prostredníctvom monografie – ***European Landscape Dynamics: CORINE Land Cover Data*** (Feranec J., Soukup T., Hazeu G., Jaffrain G. eds; spolu 43 autorov; 337 strán; vydavateľstvo CRC Press, Taylor & Francis; august 2016).

Obsah je rozdelený do piatich častí: úvod (2 kapitoly) – metodológia (7 kapitol) – európske údajové vrstvy CLC (7 kapitol) – riešenie európskych environmentálnych problémov na báze údajov CLC (9 kapitol) – perspektívy CLC (4 kapitoly); spolu 29 kapitol.



# EUROPEAN LANDSCAPE DYNAMICS

CORINE LAND COVER DATA

Edited by:

JAN	FERANEC
TOMAS	SOUKUP
GERARD	HAZEU
GABRIEL	JAFFRAIN

 CRC Press  
Taylor & Francis Group

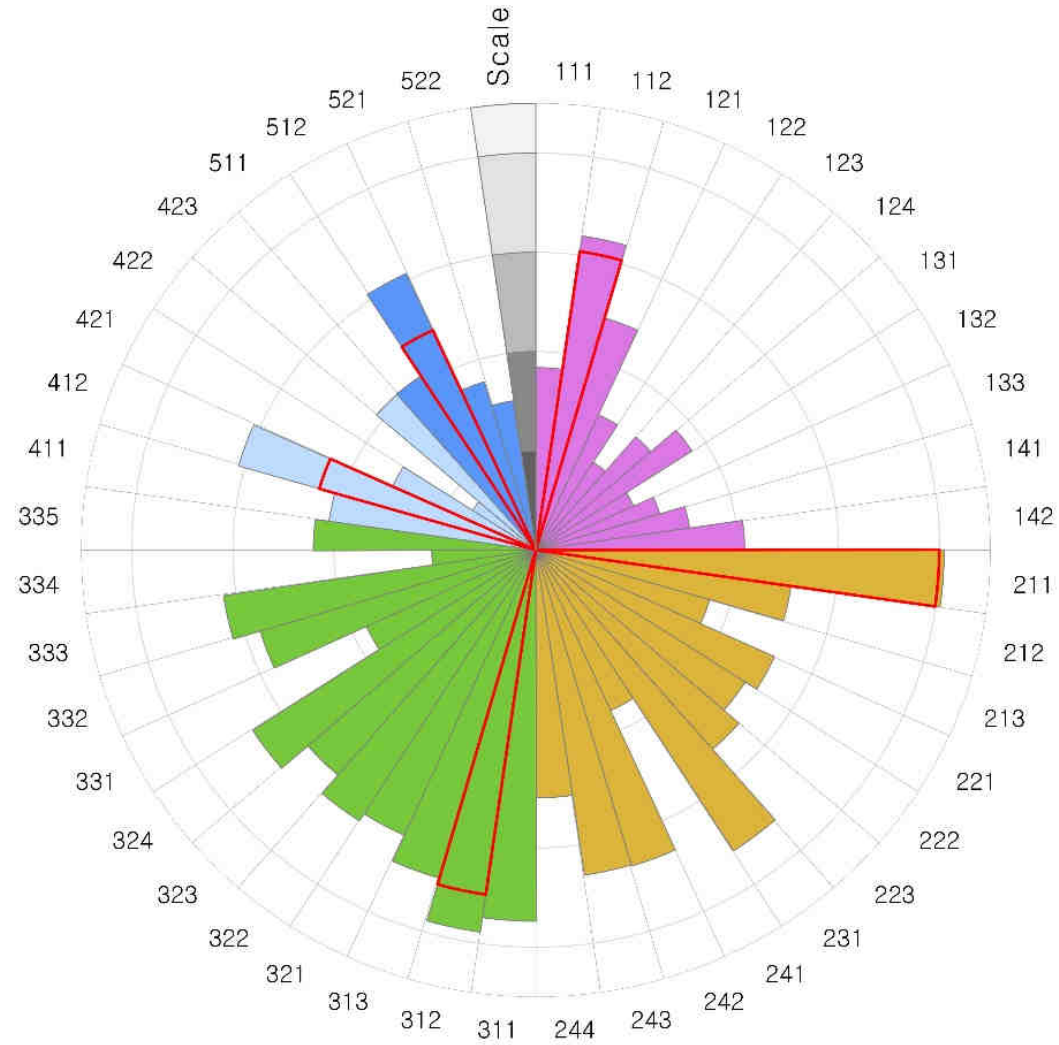


## Zastúpenie tried CLC v Európe v roku **2012**:

- lesná krajina (triedy 311 až 324) **43,9 %** povrchu Európy
- poľnohospodárska krajina (triedy 211 až 244) **41,7 %**
- areály s riedkou vegetáciou alebo bez vegetácie (33x) **4,5 %**
- urbanizovaná krajina – umelé povrchy (triedy 111 až 142) **4,4 %**
- zamokrené areály (4xx) **2,8 %**
- vody (5xx) **2,7 %**



# Rozloha tried CLC v Európe v roku 2012

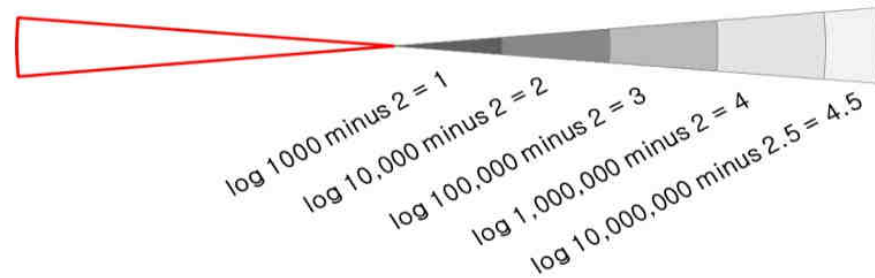


CLC classes of the 1<sup>st</sup> level

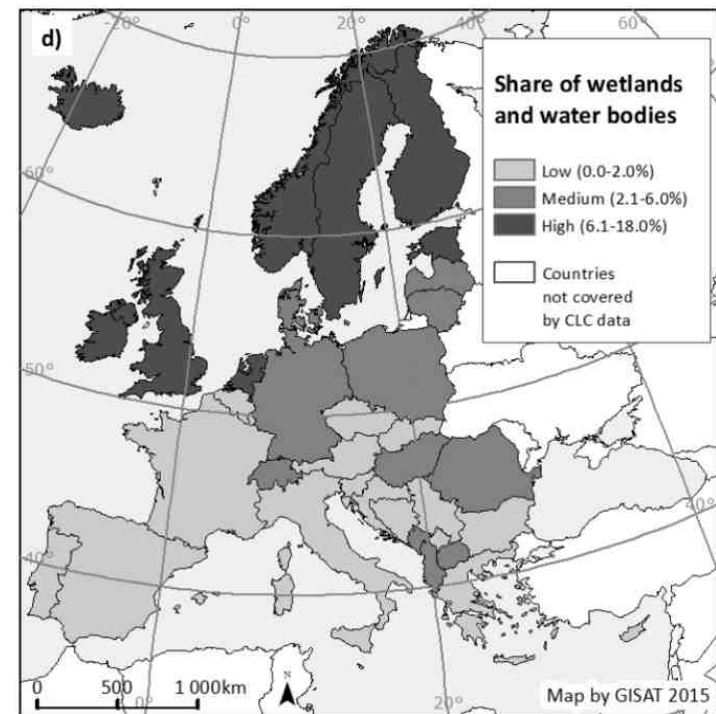
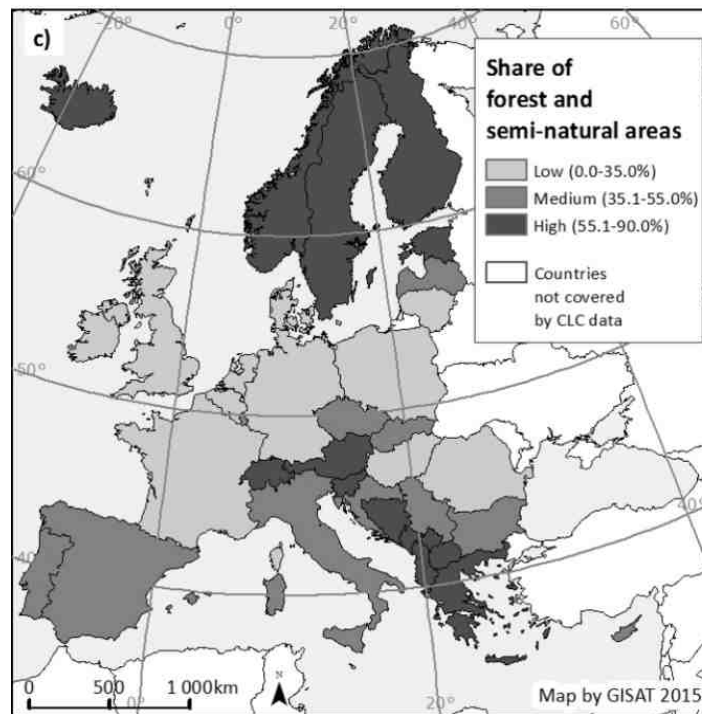
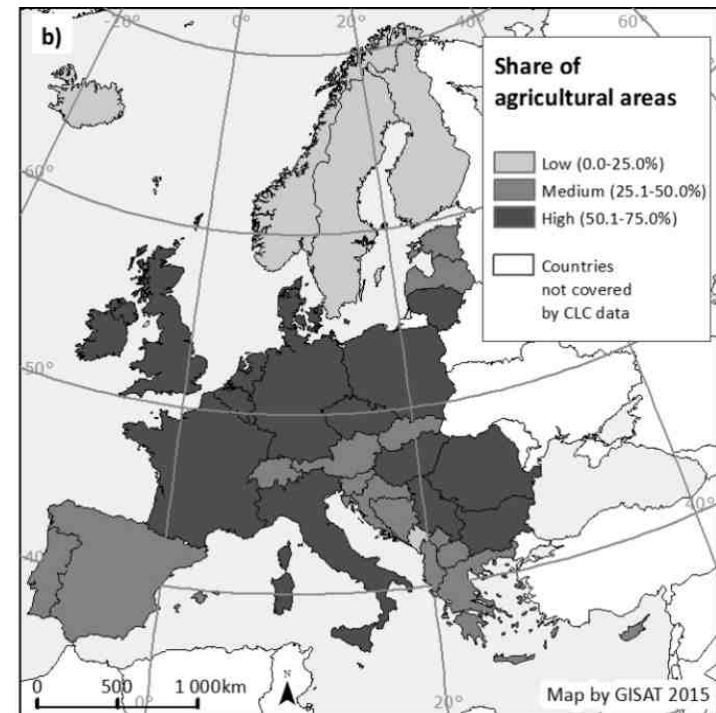
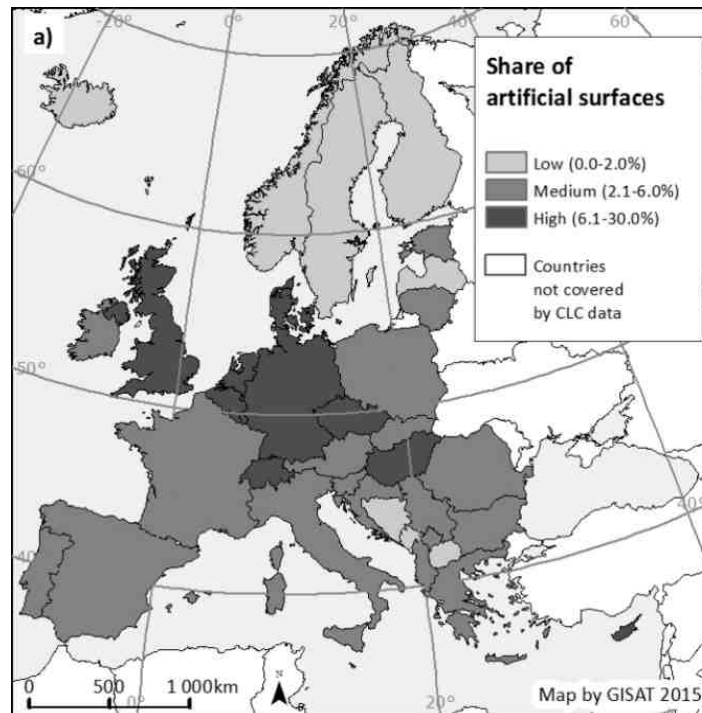
- Artificial surfaces
- Agricultural areas
- Forest and semi-natural areas
- Wetlands
- Water bodies

Area of CLC class in 1990

Logarithmic scale for area in km<sup>2</sup>



Triedy prvej hierarchickej úrovne európskych štátov podľa percentuálneho zastúpenia z celkovej rozlohy príslušného štátu





## Prehľad typov zmien krajinnej pokrývky (LCFs) v Európe v rokoch: 1990-2000, 2000-2006 a 2006-2012

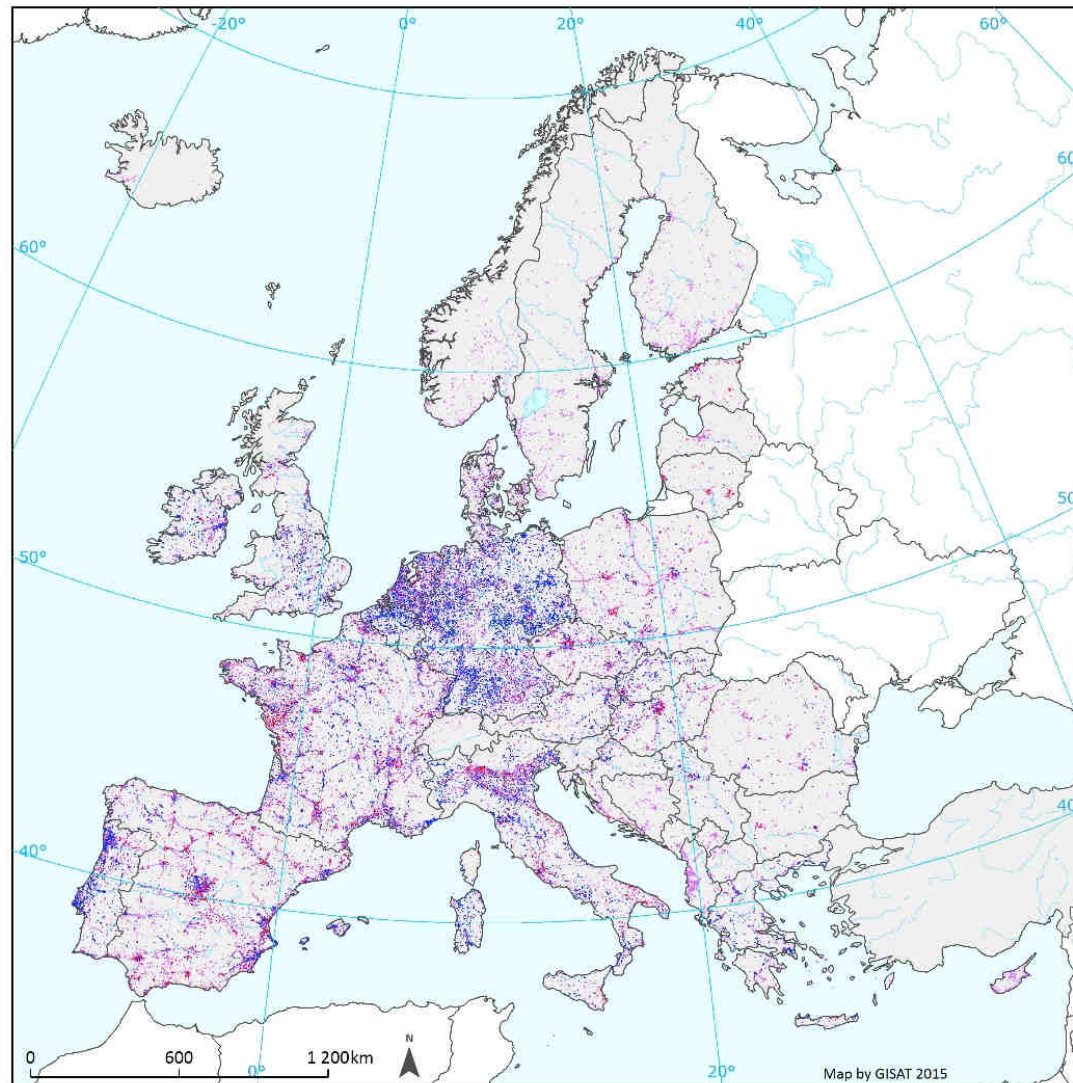
Type of change	Changes 1990 - 2000		Changes 2000 - 2006		Changes 2006 - 2012		Tendency +/-		
	km <sup>2</sup>	km <sup>2</sup> /year*	km <sup>2</sup>	km <sup>2</sup> /year	km <sup>2</sup>	km <sup>2</sup> /year	1990 - 2000	2000 - 2006	2006 - 2012
Urbanization	9,707	888	5,801	1,014	4,833	805	*	+	-
Intensification of agriculture	14,912	1520	3,890	715	3,993	666	*	-	-
Extensification of agriculture	12,969	1454	1,520	260	3,583	597	*	-	-
Afforestation	26,397	2488	9,601	1,646	11,902	1,984	*	-	-
Deforestation	20,676	2146	17,428	2,967	16,196	2,699	*	+	+
Water bodies construction	1,204	112	625	106	516	86	*	-	-
Other changes	2,042	198	1,785	310	2,091	349	*	+	+
<b>Total</b>	<b>87,907</b>	<b>8807</b>	<b>40,650</b>	<b>7,018</b>	<b>43,114</b>	<b>7,186</b>			

+ increase, - decrease, \* yearly reference value





# LCFU urbanizáció

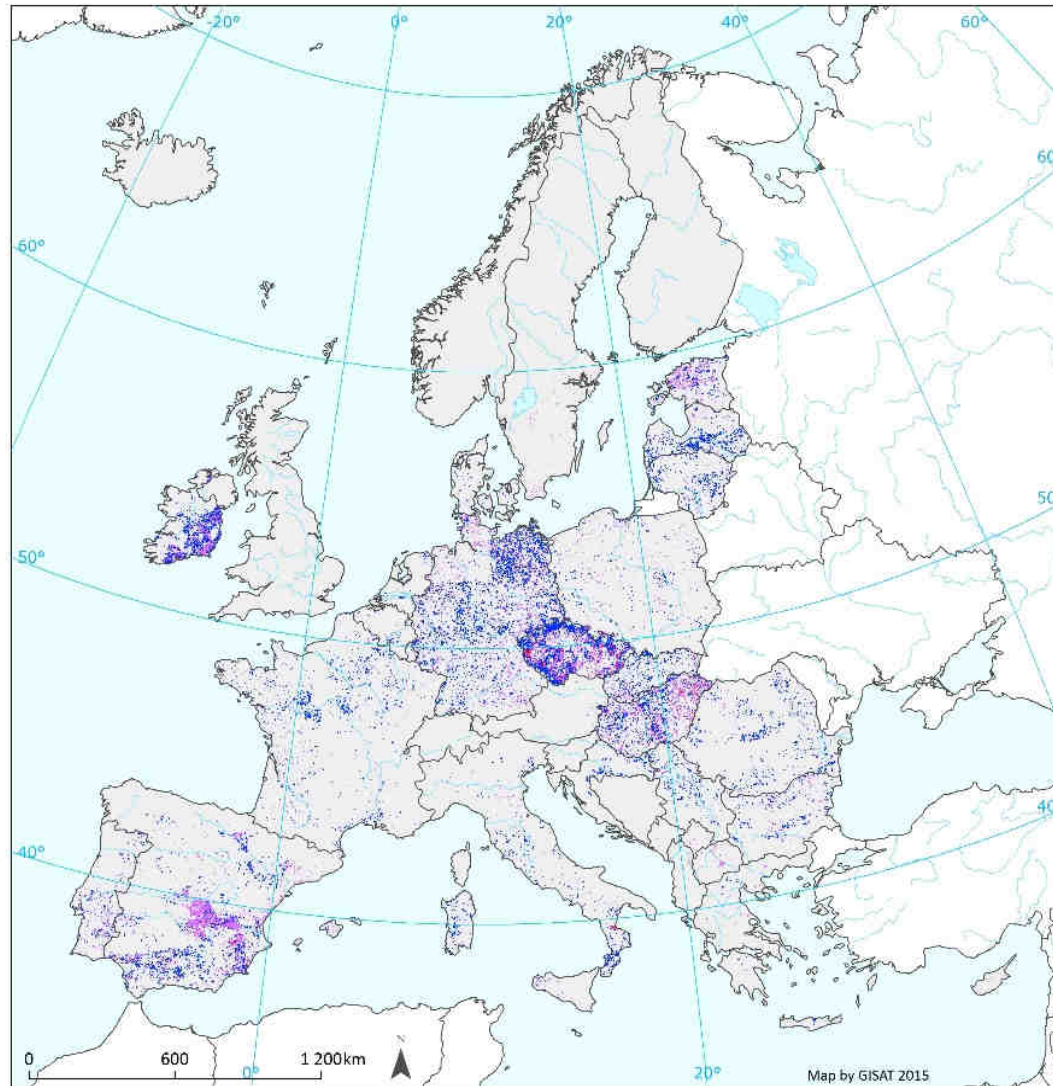


## LCFU1 Urbanisation

Comparison of LCF intensities in periods 2000-2006 and 2006-2012 with that found in 1990-2000

- **Increasing trend** (higher intensity in both periods)
- **Decreasing trend** (lower intensity in both periods)
- **Mixed trend** (higher intensity in one period, lower in second or the same intensity and changes in countries only with data of two periods 2000-2006 and 2006-2012)
- Countries covered by CLC data\*  Countries not covered by CLC data

# LCFU extenzifikácia poľnohospodárstva

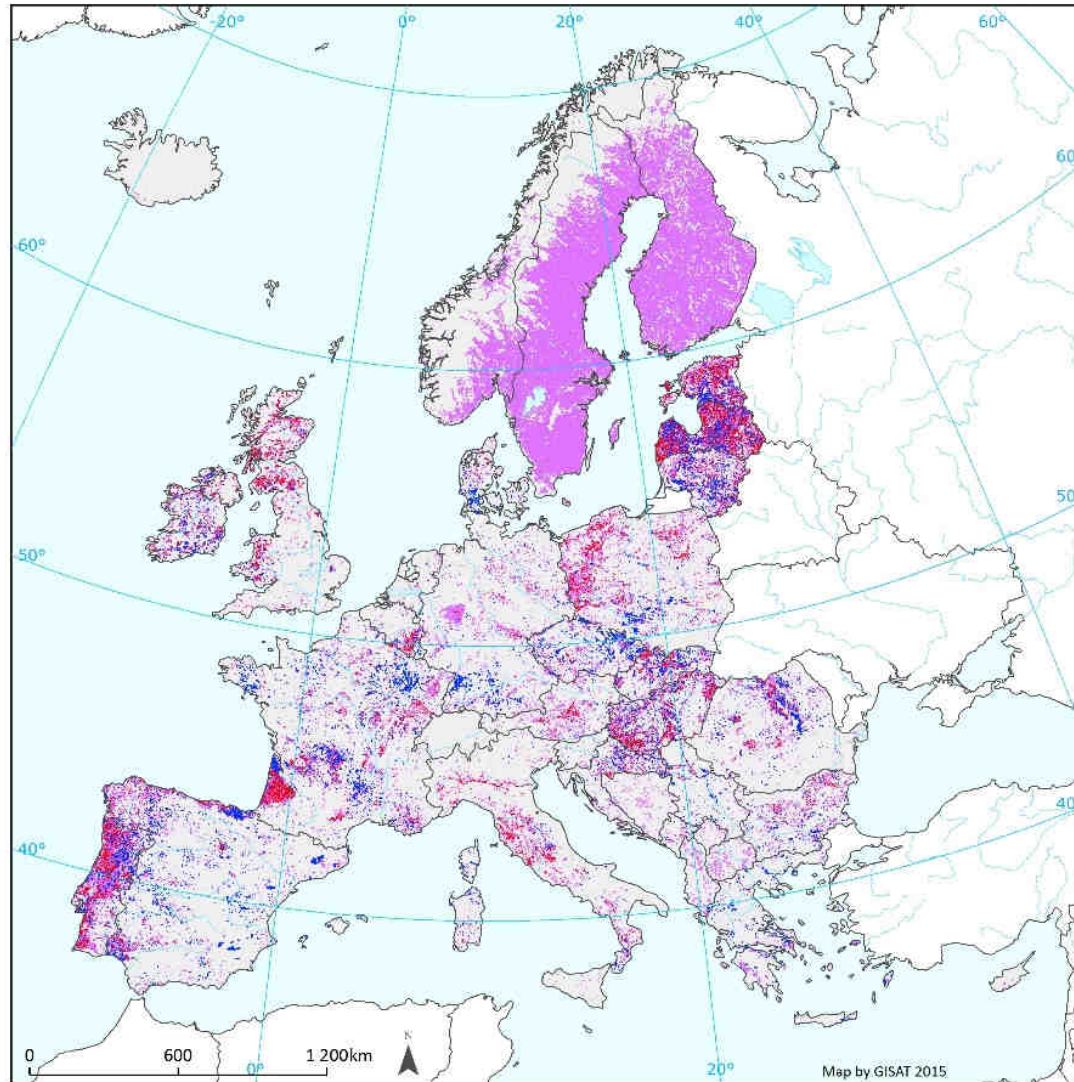


## LCFE3 Extensification of agriculture

Comparison of LCF intensities in periods 2000-2006 and 2006-2012 with that found in 1990-2000

- Increasing trend** (higher intensity in both periods)
  - Decreasing trend** (lower intensity in both periods)
  - Mixed trend** (higher intensity in one period, lower in second or the same intensity)
- Legend for data coverage:
- Grey box: Countries covered by CLC data
  - White box: Countries not covered by CLC data

# LCFU odlesňovanie



## LCFD5 Deforestation

Comparison of LCF intensities in periods 2000-2006 and 2006-2012 with that found in 1990-2000

- Increasing trend** (higher intensity in both periods)
- Decreasing trend** (lower intensity in both periods)
- Mixed trend** (higher intensity in one period, lower in second or the same intensity)

Grey box: Countries covered by CLC data    White box: Countries not covered by CLC data



## **Budúca výskumná orientácia:**

Aplikácia prístupu „bottom-up“ (zdola-nahor) pri monitorovaní krajinnej pokrývky Európy – koncept EAGLE (EIONET Action Group on Land monitoring in Europe)





**ĎAKUJEM VÁM ZA POZORNOST**

